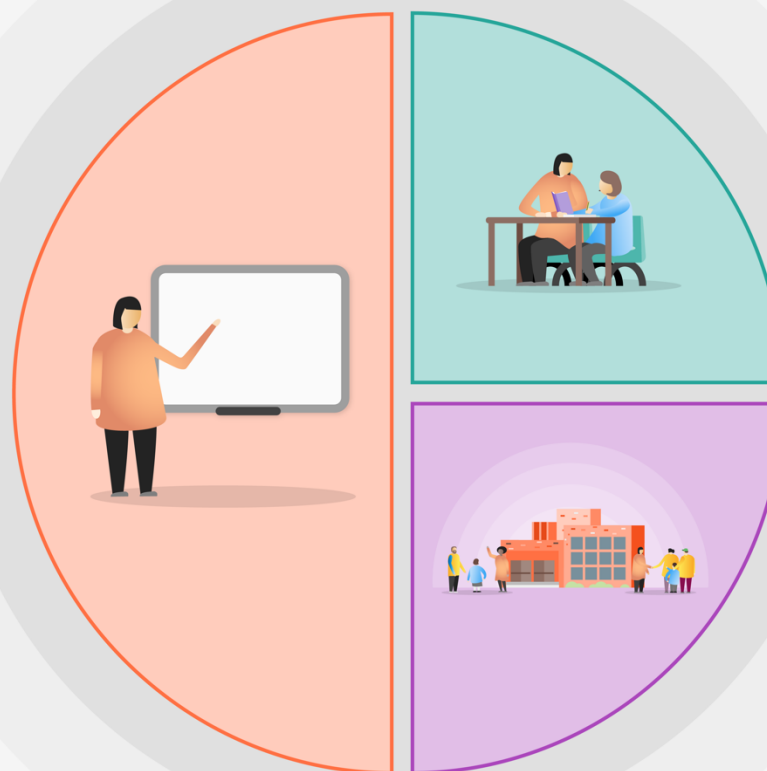


Funding £7,199 2021/22

Further details of this plan can be found within the SSP, which also incorporates the Pupil Premium Strategy.

1 Teaching

1. Quality teaching - Flexible grouping to ensure that the most vulnerable are receiving equal teacher time and are prioritised for this.
2. Structured pre teaching sessions to scaffold support well before a lesson for targeted pupils
3. Whole school assessment strategy improved to deliver regular low stakes (formative) assessments as well as summative structure in place.
4. Whole class reading approach underpinned by formative assessment practices.
5. Embed the new maths curriculum with focus on mastery approach driven through CPD and focused monitoring and assessment.
6. Continue to develop and refine the broad and ambitious curriculum alongside the professional development of all subject leaders.



LTP and MTP has been structured to ensure curriculum richness and delivery. IT resources to be developed to support curriculum implementation. Comprehensive staff IT training programme in place to ensure impact of curriculum is relevant, positive and seen evidenced across all subjects.

2 Targeted academic support

High Quality 1 to 1 and small group interventions including additional tuition as well as pre teaching. Ambitious and focuses staff time tables developed to deliver to all pupils.
EYFS – NELI programme to improve spoken language.
Catch up Literacy programme for year 1 to 6.
Whole school phonics approach/tracking linked to vocabulary development programme.

3 Wider strategies

Mental health programme of support with specific staff team to be deployed across the school.
School staff to be used for supply cover wherever possible to ensure high expectations and continuity.
Development of reading for pleasure areas for every class.
Weekly feedback to those families of 'catch up' pupils to inform on progress.
Maintain those practices from 'lockdowns' that best support a positive school environment e.g lunchtime organisation etc